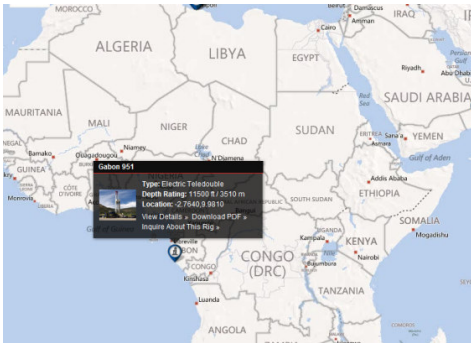


SoftTorque end-user and major directional drilling service company testimonial

Ensign Energy Rig 951, Shell GABON - 2012



Subject: RE: Soft Torque system

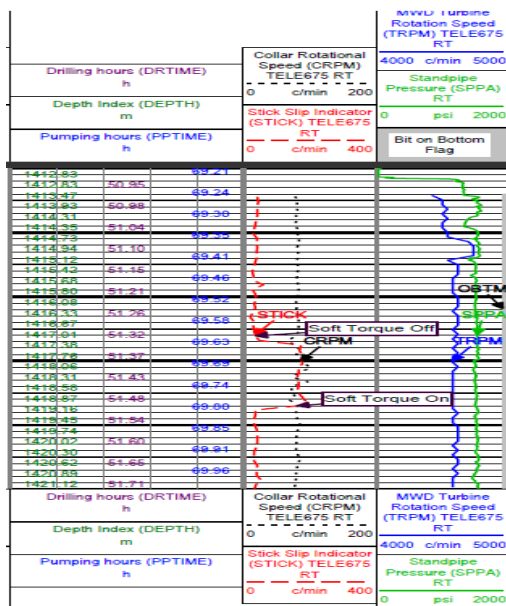
Here we go.

We just proceeded to a test and drilled 2m with the Soft Torque off, and the results are awesome. We kept parameters constants during this test, and we carry on drilling at all times. After a connection, 13m were drilled (from 1404 to 1417m), with the Soft Torque running, and S/S remains steady at average 30.

Turned the Soft Torque off at 1417m, and drilled an additional 2m down to 1419m. Stick-Slip immediately picked up to severe levels at 170 (Surface RPM at 80). Turned the Soft Torque on with a finger click on the tactile screen, on the fly, and S/S back to steady low levels around 30. Same improvement seen on surface torque and surface RPM.

Looks magical !

Here attached is a graph of the test. If we can have such a system running on all the rigs, tools reliability will make a giant step.



Regards, Rene