

RIG: SONGA VENUS

RIG	Songa Venus
Type	Jack-up RIG AC
Location	Off-shore Qatar
Contractor	Noble Drilling
Operator	Shell

Top Drive System

Model:	Tesco 1350ECI
Deliverer:	TESCO
Total Power:	1150 HP
Drilling motor:	GEB 20 AC (PM motor)
VFD	MD500

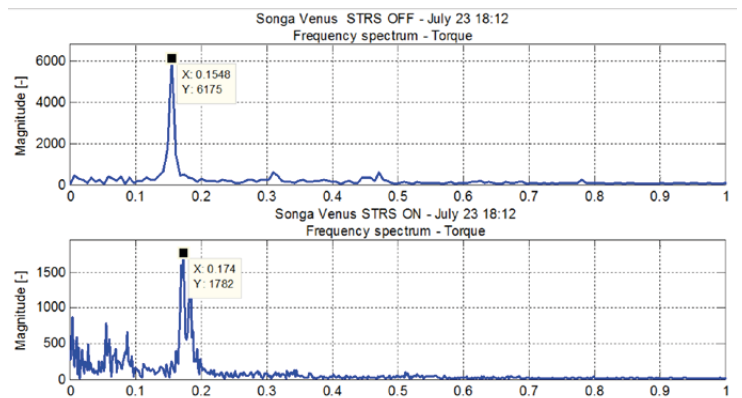
EPST implementation	July 2010
---------------------	-----------

Specials	Analog I/O interface Serial controller
----------	---

Added functionality	Auto WOB Auto ROP
---------------------	----------------------

EPST PERFORMANCE ON/OFF

- For ON low torque amplitude
- For OFF high amplitude = stick-slip



SHELL CONCLUSIONS:

- Severe stick slip observed during 8.5" run
With NO EPST up to 15kNm T amplitude
- Soft Torque
 - EPST successfully installed
 - EPST effective most of time in suppressing stick-slip