



RIG: NOBLE HANS DEUL

RIG	Noble Hans Deul
Type	Jack-up RIG AC
Location	North Sea, Netherlands
Contractor	Noble Drilling

Top Drive System

Model:	TDS-HPS-750 E-AC-KT
Deliverer:	NOV
Total Power:	1150 HP
Drilling motor:	GEB 20 AC
VFD	MasterDrive (Siemens)

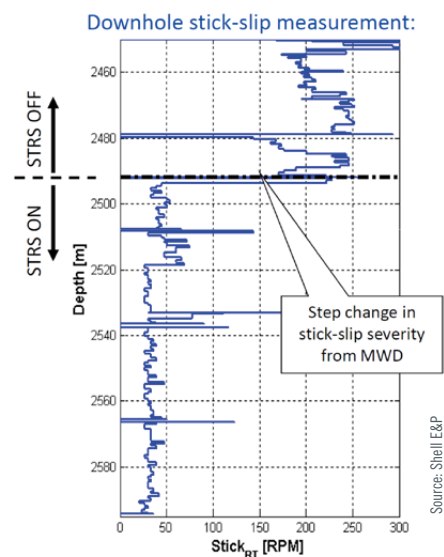
EPST implementation	February 2009
---------------------	---------------

Specials	Parallel PROFIBUS Communications with VFD
----------	--

Added functionality	Auto WOB Auto ROP
---------------------	----------------------

EPST IMPACT:

- Eliminated stick-slip
- Improve well bore
- Less wear and tear on down hole tools



SITUATION:

- 60° inclination
- 12¼" section: PDC
- 5½" DP to surface
- 2450 – 5550 m.
- Salts & hard abrasive sands